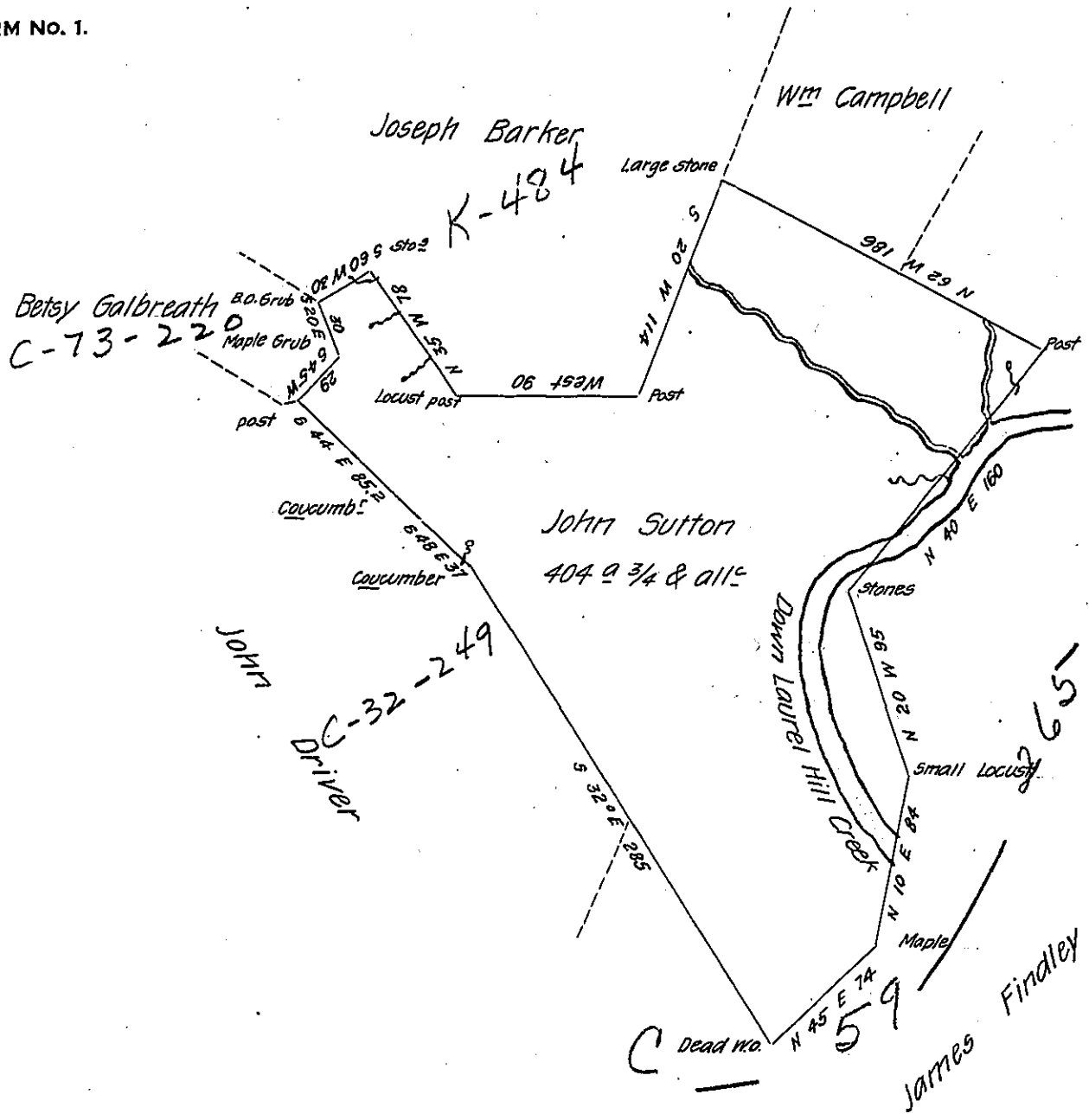


FORM NO. 1.



Situate on both sides of Laurel Hill Creek in Milford Township Somerset
 County and surveyed the 24th day of May 1804 in pursuance of a warrant granted unto
 John Sutton dated the 30th day of April 1804

John McCleary Deputy

To Samuel Cochran Esquire
 Surveyor General.

IN TESTIMONY that the above is a copy of the original remaining on file in
 the Department of Internal Affairs of Pennsylvania, made
 conformably to an Act of Assembly approved the 16th day of
 February 1833, I have hereunto set my hand and caused
 the Seal of said Department to be affixed at Harrisburg,
 this nineteenth day of December 1906

Isaac R. Brown
 Secretary of Internal Affairs.